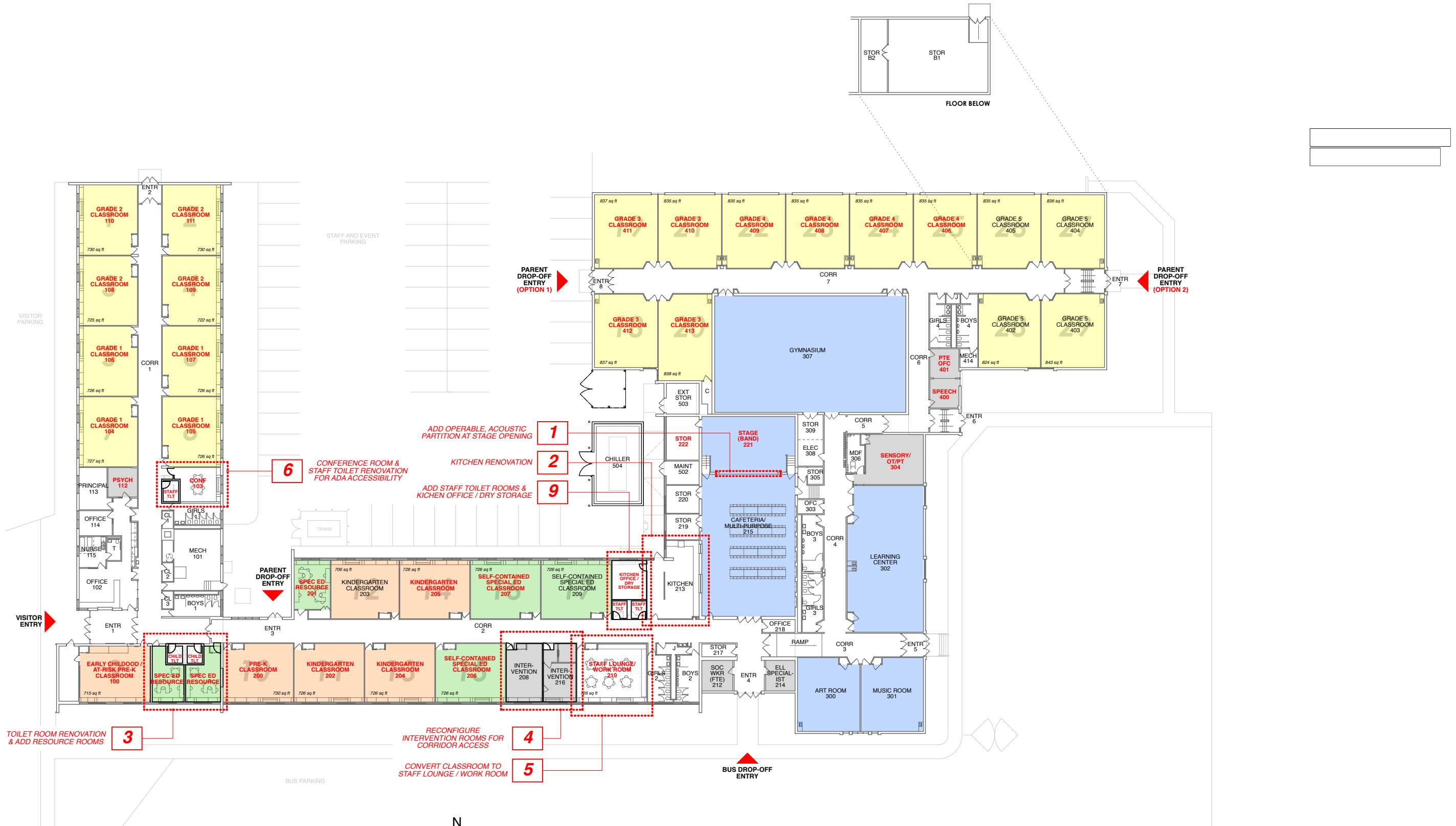


# HOOPER ELEMENTARY SCHOOL

2400 Sand Lake Road | Lindenhurst, IL 60046



1 ADD OPERABLE, ACOUSTIC PARTITION AT STAGE OPENING

2 KITCHEN RENOVATION

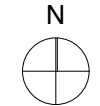
9 ADD STAFF TOILET ROOMS & KITCHEN OFFICE / DRY STORAGE

6 CONFERENCE ROOM & STAFF TOILET RENOVATION FOR ADA ACCESSIBILITY

3 TOILET ROOM RENOVATION & ADD RESOURCE ROOMS

4 RECONFIGURE INTERVENTION ROOMS FOR CORRIDOR ACCESS

5 CONVERT CLASSROOM TO STAFF LOUNGE / WORK ROOM



## FIRST FLOOR PLAN

NOT TO SCALE





**Option 3 - BJ Hooper Elementary School - SE Bus Lot Expansion and Playground Relocation**